

**16. NEW IBERIA CITY PARK**  
300 Parkview Dr. | New Iberia



Dave brings Annie, Alafair, and later Bootsie here for crawfish boils, barbecues, picnics and softball games. Home to "Devil's Pond," where visitors can feed the ducks while enjoying the wildlife.

**17. BOOKS ALONG THE TECHE**  
106 E. Main St. | New Iberia

The local bookstore where Burke fans can find signed first editions of the Robicheaux novels as well as other modern bestsellers. Books Along the Teche's owners, Howard and Lorraine Kingston, are the resident experts on anything and everything James Lee Burke.

**18. CLEMENTINE DINING & SPIRITS**  
113 E. Main St. | New Iberia

"I put on my rain hat and walked downtown in the twilight. Customers here having drinks under the colonnade in front of Clementine's Restaurant, and across the street, at the Goughenheim Bed and Breakfast, guests were enjoying the evening on the balcony, and farther down the block a crowd was waiting under the colonnade to go inside BoJangle's."

—The Glass Rainbow



These locations are still open today. Burke's character hung his hat many a night here and the bar is well-known for its antique beauty. Clementine, which was once Provost Café, might be the "poolroom" Robicheaux frequents due to its location and description of the mahogany bar in *Heaven's Prisoners*.

**19. VICTOR'S CAFETERIA**  
109 W. Main St. | New Iberia

Home of the Breakfast Club and Dave's favorite lunch hangout, Victor's Cafeteria is the only place in Iberia Parish where you can officially visit Dave's bait shop. It is a popular Cajun downtown cafeteria-style eatery where Dave is known to take prisoners to lunch from time to time.



**20. FREDERICK HOTEL**  
910 E. Main St. | New Iberia



The Frederick Hotel, while still retaining traces of its original hotel grandeur, is now an office complex. The hotel was mentioned in *Sunset Limited*.

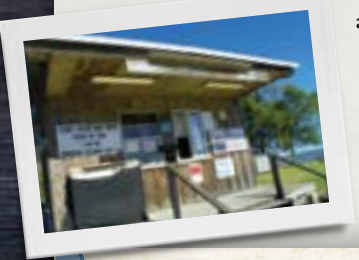
**21. EPISCOPAL CHURCH OF THE EPIPHANY**  
303 W. Main St. | New Iberia

Consecrated in 1858 on land donated by plantation owner Harvey Hopkins, it is the oldest church building still in use in New Iberia. Dave goes to AA meetings here. Mentioned in *Heaven's Prisoners*.



**22. SPANISH LAKE**  
117 Spanish Lake Rd. | New Iberia

Spanish Lake was named for the Spanish settlers who took up residence along its banks. In 1863, Camp Pratt, a Confederate boot camp, was established along its borders. Dave and Elrod Sykes, an alcoholic actor, see ghosts of Confederate soldiers and General John Hood Bell at the lake during a filming of a movie in *In the Electric Mist with Confederate Dead*. In 1957, Dave meets the young Bootsie Mouton and falls in love at a dance out at Spanish Lake.



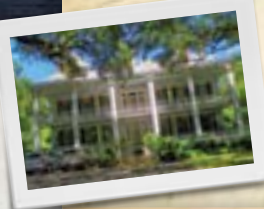
**23. ALICE PLANTATION & BAYSIDE PLANTATION**  
Old Jeanerette Rd., Hwy. 87 | Jeanerette

"Just before the drawbridge, I could see Alice Plantation, built in 1796, and farther on a second antebellum home, one that is arguably among the most beautiful in the Deep South."  
—The Glass Rainbow

These private homes can only be viewed from the highway. Alice Plantation is a 200-plus-year-old home that was once a bed and breakfast. Bayside is a plantation home built in 1850 by Francis DuBose Richardson. Look for the historical markers.

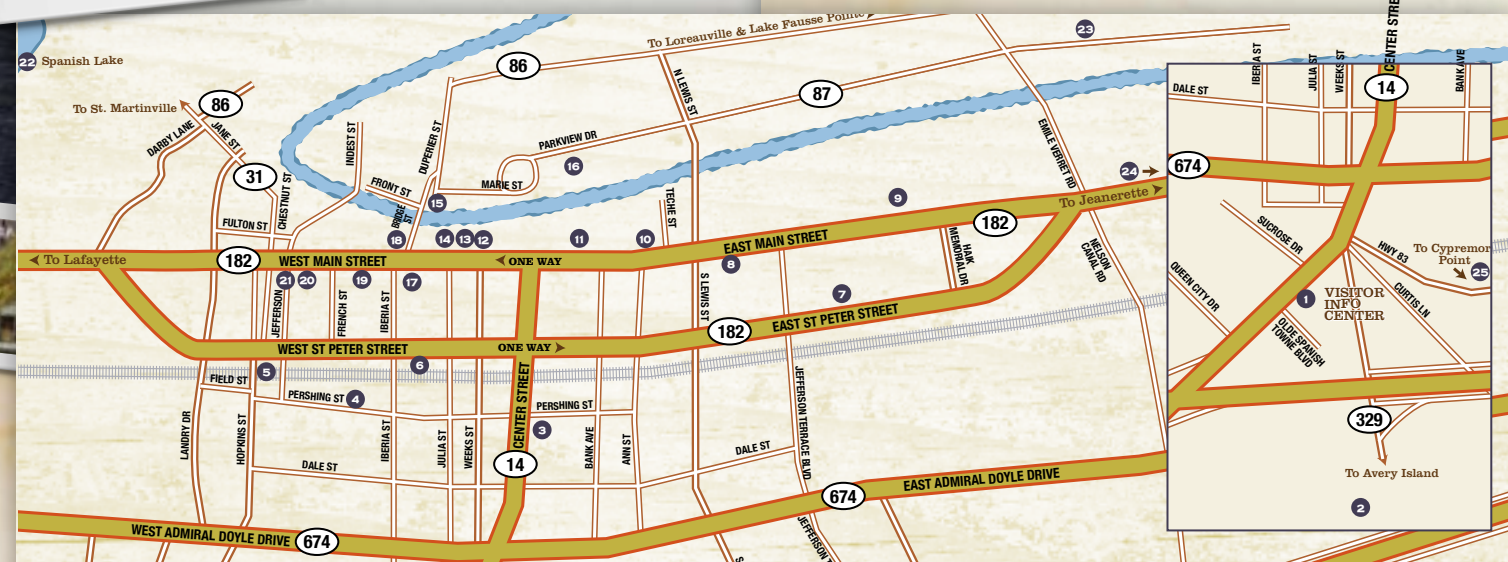
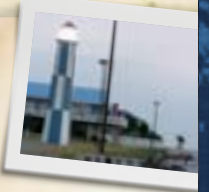
**24. ALBANIA PLANTATION**  
Albania Rd. at LA 182 E. | Jeanerette

Used in the film *In the Electric Mist* as a stand-in location for Bayside Plantation, the home was built between 1837 and 1842 on 6,500 acres. The home is currently owned by Hunt Slonem, the celebrated New York artist who created the cross-hatched pattern of painting.



**25. CYPREMORT POINT**  
306 Beach Ln. | Cypremort Point

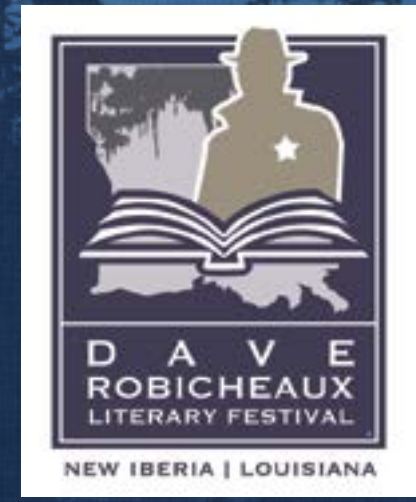
Cypremort Point is a sportsman's paradise with a man-made beach where families can experience the outdoors like Dave Robicheaux, who ritually took his daughter Alafair to a fictional open-air restaurant at the Point. Mentioned in *A Morning for Flamingos*.



IBERIA PARISH  
**Convention & Visitors Bureau**  
iberiatravel.com

Iberia Parish savor the difference.

**DAVE ROBICHEAUX'S HOMETOWN LITERARY FESTIVAL**



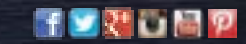
HELD ANNUALLY

**JAMES LEE BURKE'S IBERIA**

ON THE TRAIL OF DETECTIVE DAVE ROBICHEAUX

IBERIA PARISH CONVENTION & VISITORS BUREAU  
2513 HWY 14 | NEW IBERIA, LA 70560  
888-942-3742 | IBERIATRAVEL.COM

IBERIATRAVEL.COM





**1. IBERIA PARISH CONVENTION & VISITORS BUREAU**  
2513 Hwy. 14 | New Iberia

Start the Dave Robicheaux tour at the official Iberia Parish Welcome Center.



**2. TABASCO® FACTORY**  
Hwy. 329 | Avery Island

“But he got both of us fired at the hot-sauce factory, since the owner couldn’t tell us apart, when he tried to wash bottles en masse by filling a dozen gunny sacks with them and weighting them down in the bayou’s current.”

—*The Neon Rain*

The Avery Island experience allows guests to sample the best Cajun dishes on a TABASCO® Food Tour, see the TABASCO® Factory like never before with an expanded tour, new visitor center and Creole-cottage cafeteria-style restaurant. Jungle Gardens, home of “Bird City,” founded by E. A. McIlhenny, is a three-mile driving/walking tour around the remains of an unusual nursery.

**3. OLD NEW IBERIA HIGH SCHOOL NOW SCHOOL DAYS APARTMENTS**  
415 Center St. | New Iberia

This building has seen many students pass through its doors. Dave Robicheaux himself mentioned attending the school. It is now assisted living apartments.



**NATIONAL REGISTER OF HISTORIC PLACES**

Photos by Margaret Melancon



**4. IBERIA PARISH COURTHOUSE**  
300 S. Iberia St. | New Iberia

In earlier novels, Dave’s office was located at the courthouse. He also shared it with Special Agent Rosie Gomez in *In the Electric Mist with Confederate Dead*.

**5. NEW IBERIA AMTRAK STATION**  
402 Washington St. | New Iberia

“The Amtrak still ran on the Old Southern Pacific Roadbed that carried my mother out to Hollywood in 1946, made up of the same cars from the original Sunset Limited she had ridden in, perhaps with the same desert scenes painted on the walls.”

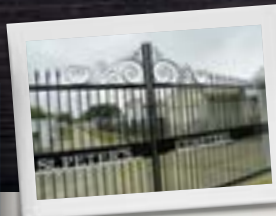
—*Sunset Limited*

The Texas and New Orleans Railroad built this single-story brick, romanesque-style station in 1900. The Louisiana & Delta Railroad uses it as its headquarters. Amtrak offers tri-weekly train service.



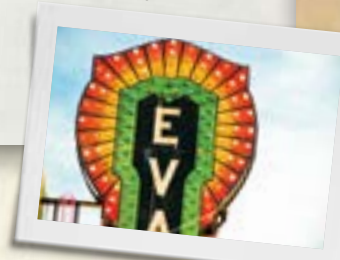
**6. ST. PETER’S CATHOLIC CHURCH AND CEMETERY**  
108 E. St. Peter St. | New Iberia

St. Peter’s Church was built in 1836 on land donated by the Frederick Duperier family. Church Alley between Main Street and St. Peter Street was left open to fulfill the donation’s provision that the church be visible from the Duperier home (located where Mt. Carmel is today). Dave’s wife Annie was buried in his family plot at the cemetery in *Heaven’s Prisoners*.



**7. BON CREOLE**  
1409 E. St. Peter St. | New Iberia

One of Dave’s local eateries, he could often be found here chowing down on shrimp po-boy sandwiches. For instance, in *Pegasus Descending* he stops here during a case. This hole-in-the-wall lunch counter has been a favorite of both locals and visitors for years.



**8. EAST MAIN STREET**

“East Main in New Iberia is probably one of the most beautiful streets in the Old South or perhaps the whole country.”

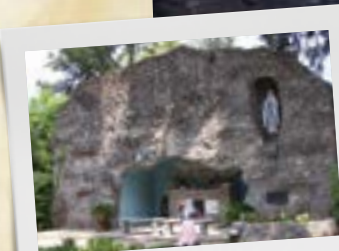
—*A Stained White Radiance*

Century-old oaks surround stately homes in the National Register Residential District. New Iberia’s Historic commercial district won the 2005 Great American Main Street Award®, sponsored by the National Trust for Historic Preservation®.



**9. TECHE MOTEL**  
1829 E. Main St. | New Iberia

Perhaps one of New Iberia’s oldest accommodations, the motel’s motif and character fit into the world of Dave Robicheaux like no other. Robicheaux loved the neon sign that is still on the property today. Clete also rents a room to live here in the novel *Creole Belle*. Visitors looking for the authentic Robicheaux experience will not be disappointed.



**10. BURKE HOUSE**  
715 E. Main St. | New Iberia

“It was a fine house in which to live, cool in the summer and warm in the winter, the ceiling—high outfitted with ventilated storm shutters, our new veranda a grand place to sit in wooden rockers among our potted plants and house pets.”

—*The Glass Rainbow*

James Lee Burke’s grandfather, Walter Burke, lived here. As a youth, Burke visited his grandparents, played along the banks of the Bayou Teche and fixed in his mind the romantic image of New Iberia that pervades his books. Bastiste, Dave Robicheaux’s friend and employee at his fish camp, is modeled on the real Batiste, who worked for Walter Burke when James Lee Burke was growing up.

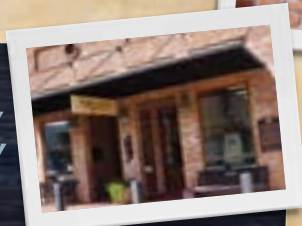


**11. IBERIA PARISH LIBRARY & GROTTO OF OUR LADY OF LOURDES**  
445 E. Main St. | New Iberia

“My office was now located in City Hall, on Bayou Teche, with a grand view of a religious grotto and wonderful oak trees next to the city library.”

—*The Glass Rainbow*

Public park with shrine dedicated to the Veterans of Foreign Wars from New Iberia who died in the service of the United States of America. The main branch of the Iberia Parish Library system houses the Bunk Johnson Jazz Collection Room.



**12. SHADOWS-ON-THE-TECHE**  
317 E. Main St. | New Iberia

“I drove down East Main under the arched live oaks that spanned the street, toward the Shadows, a red brick and white-columned antebellum home built in 1831 on Bayou Teche.”

—*Cadillac Jukebox*

Built for a wealthy sugar planter, the Shadows-on-the-Teche was home to four generations before becoming a National Trust Historic Site. Live oaks draped with Spanish moss cast shadows on the house, gardens and Bayou Teche. Guided tours available.



**13. P.R. BURKE’S OFFICE**  
223 E. Main St. | New Iberia

“We crossed the drawbridge over Bayou Teche. The water was brown and high, the dragonflies flicked over the lily pads in the sunlight. Close along the banks I could see the armored backs of gars turning in the shade of the cypress trees.”

—*Heaven’s Prisoners*

James Lee Burke’s cousin owns and operates the law office on Main Street. It is mentioned in *The Glass Rainbow*. Behind the offices is PJ Allain Waterfront Park and Sculptural Garden, which offers a scenic view of Bayou Teche.



**14. BAYOU TECHE MUSEUM**  
131 E. Main St. | New Iberia

Visit the Bayou Teche Museum to view the James Lee Burke exhibit and see Dave’s Bait Shop as well as memorabilia and a video. The museum also hosts exhibits on “blue dog” artist George Rodrigue, Iberia Parish’s cultural and industrial history and the infamous New Iberia Shipwreck.

**15. MT. CARMEL NOW PLACE EUGENIE**  
109 Bridge St. | New Iberia

In *Heaven’s Prisoners*, Dave and Annie brought Alafair to Mt. Carmel after rescuing her from a plane crash in the Gulf of Mexico. It was the first hospital in New Iberia. The 1850s building became a Catholic girls school in 1872 and was closed in 1985.

